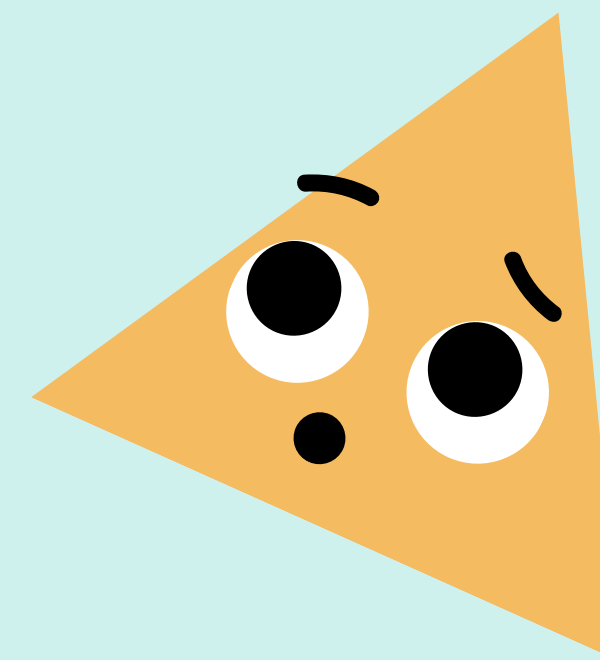
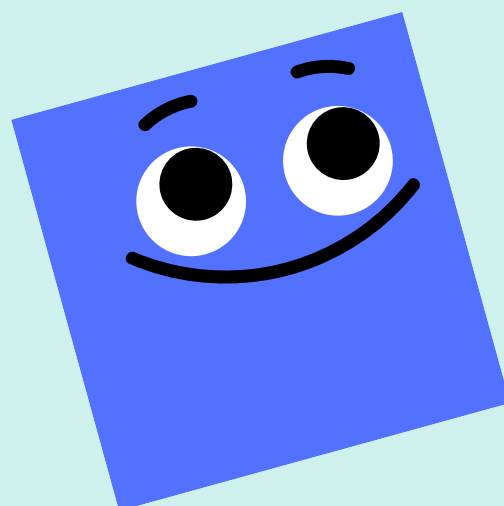
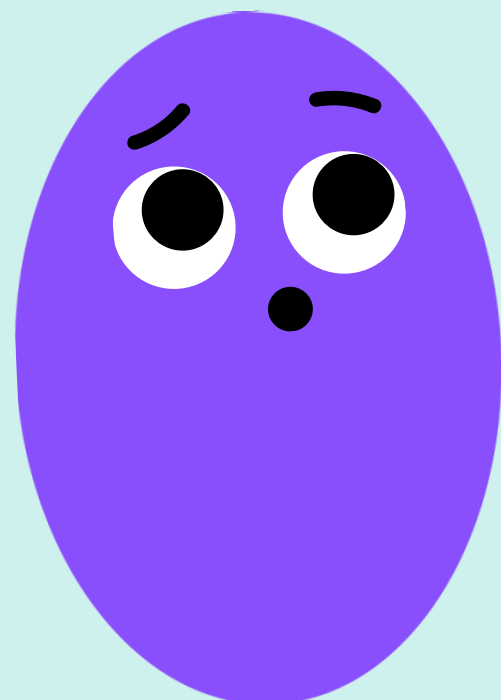


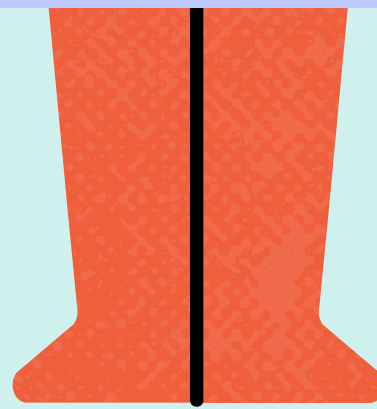
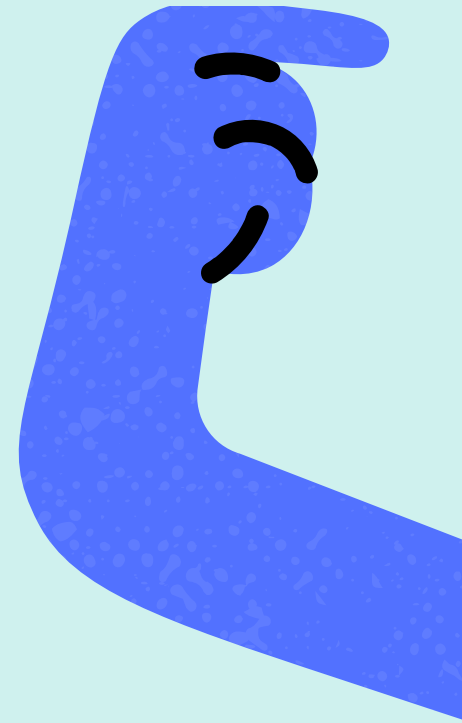
Geometrinės figūros

PARENGĖ: MOKYTOJA ANA MOCKŪNIENĖ

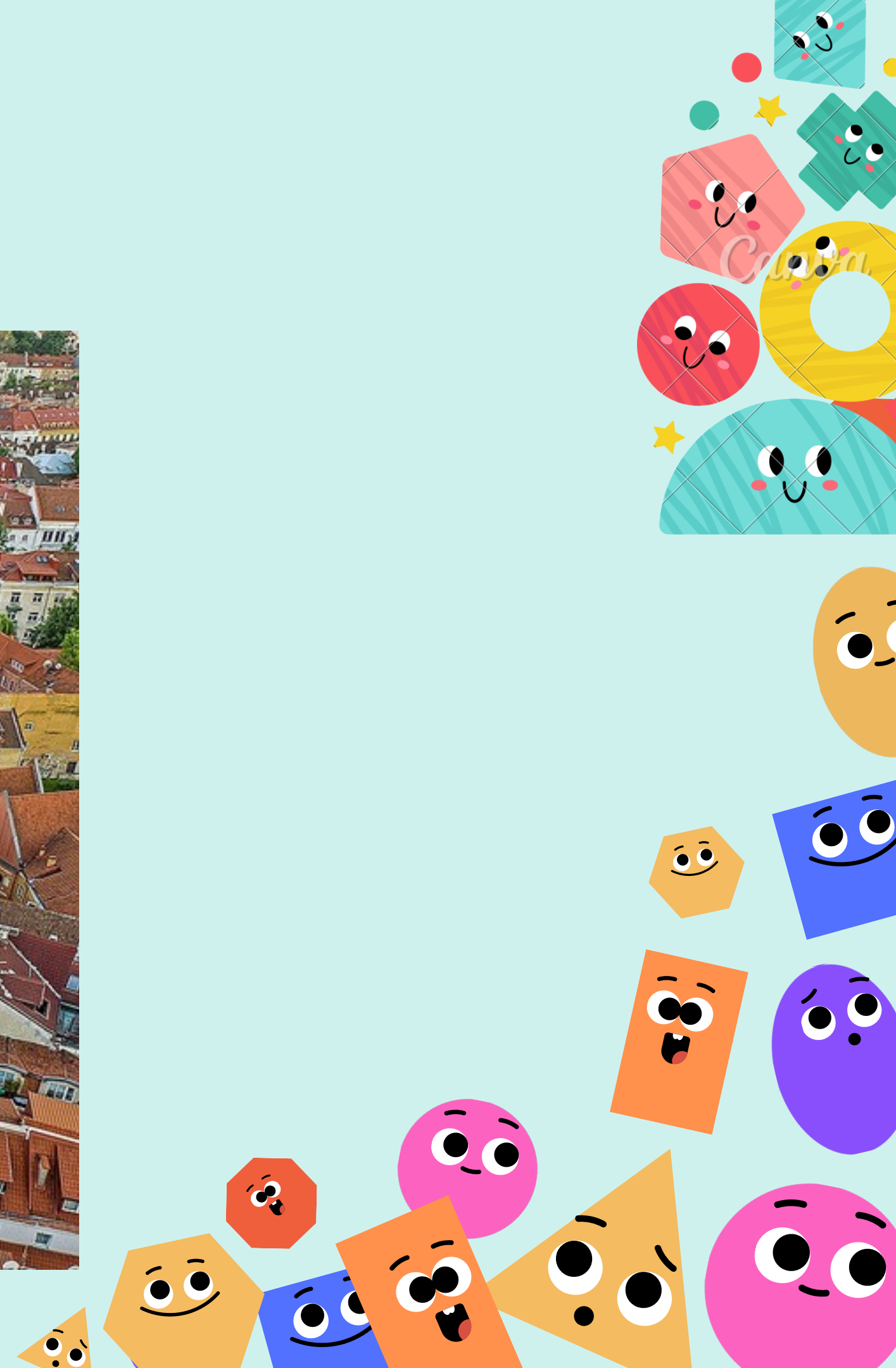


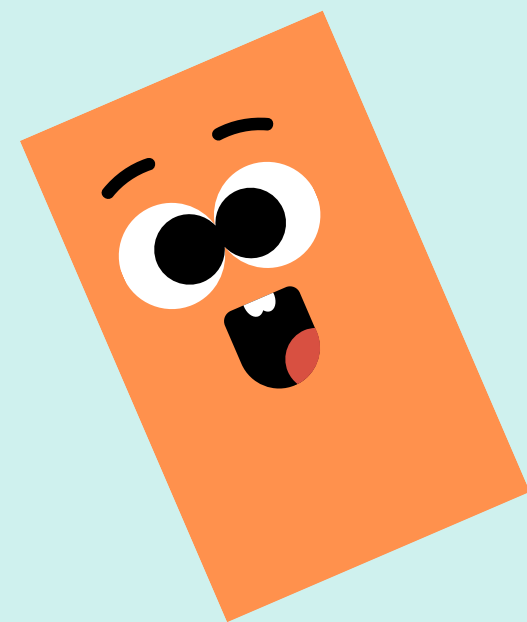
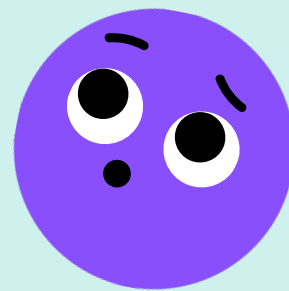
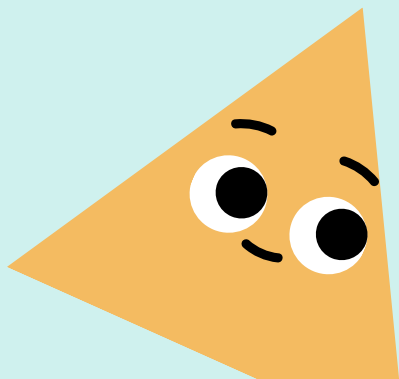
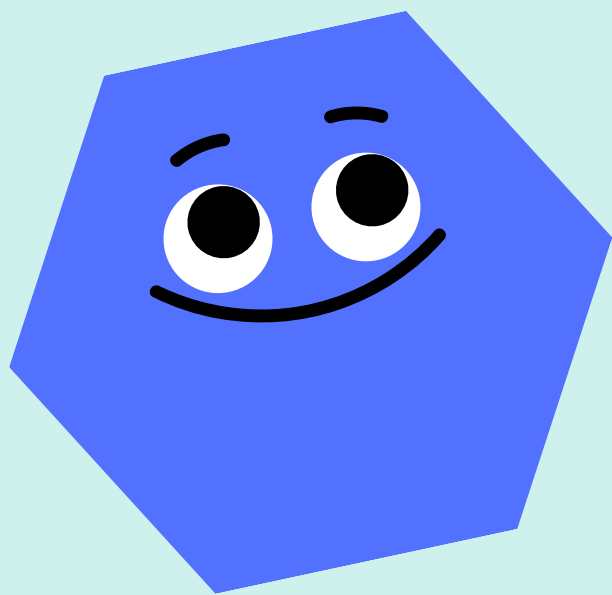
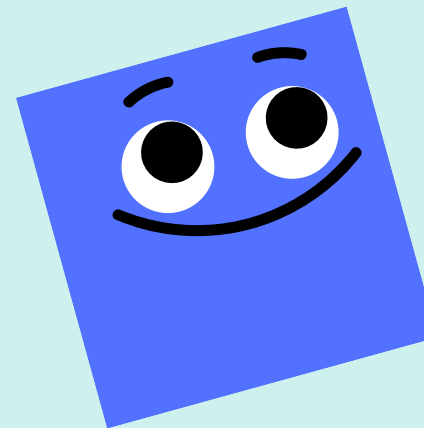
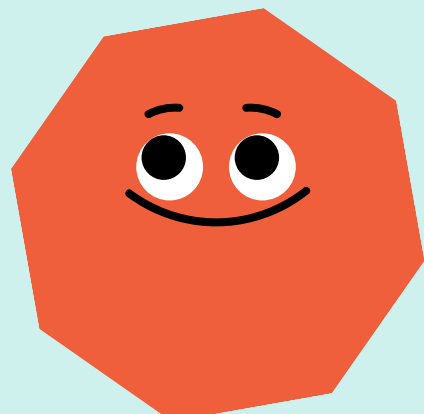
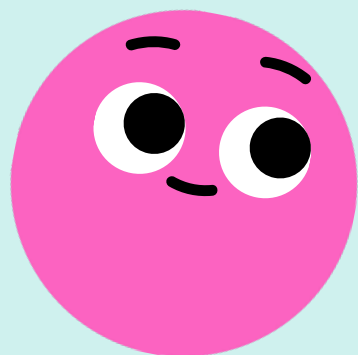
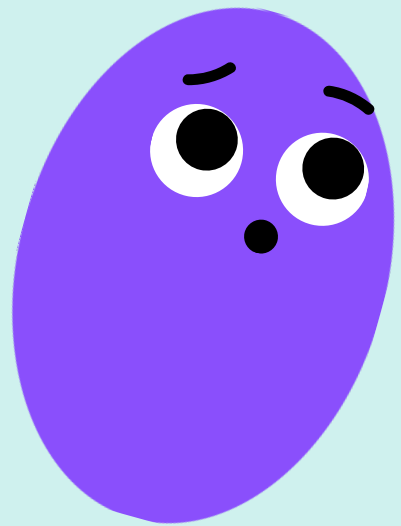
Uždaviniai:

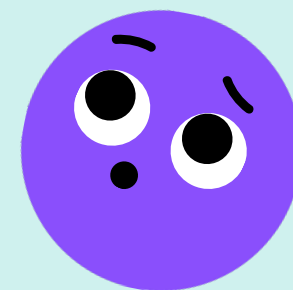
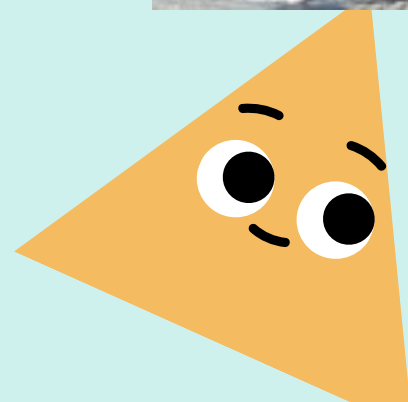
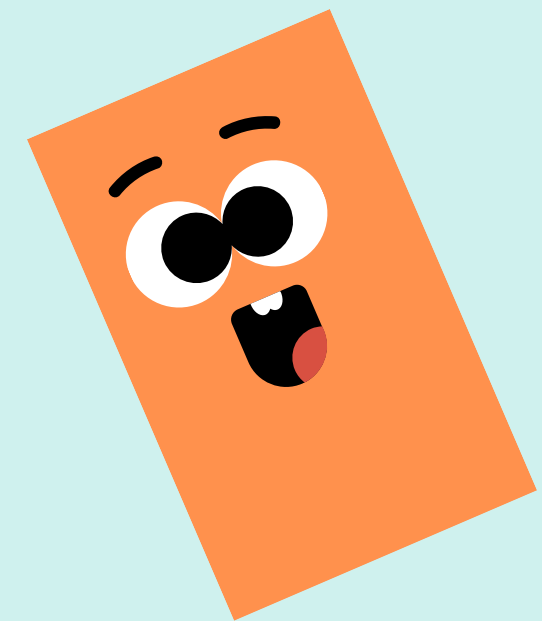
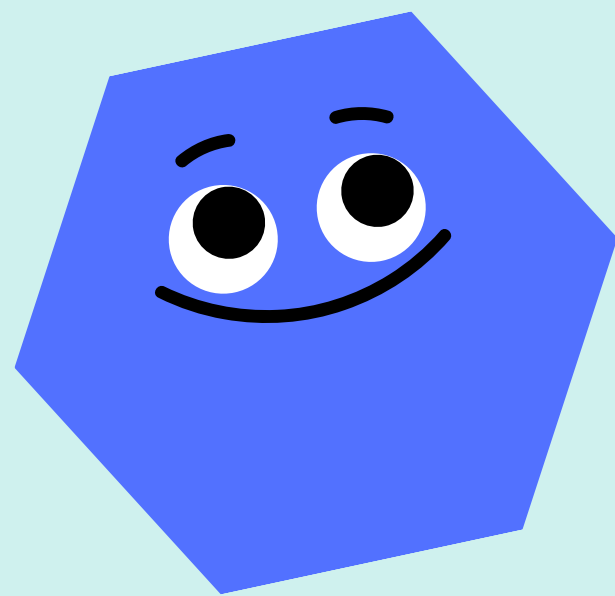
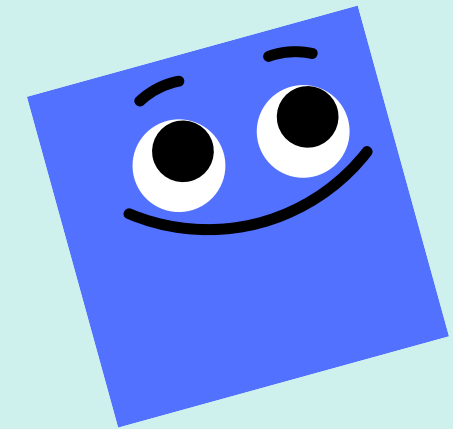
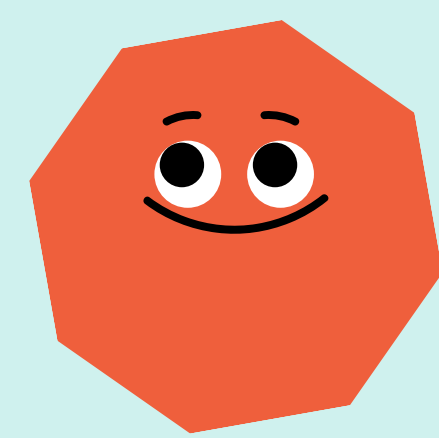
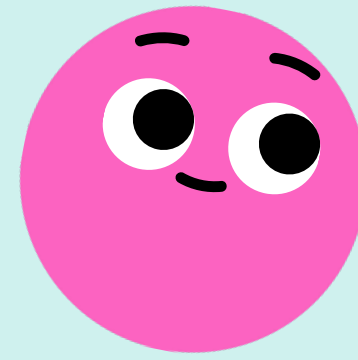
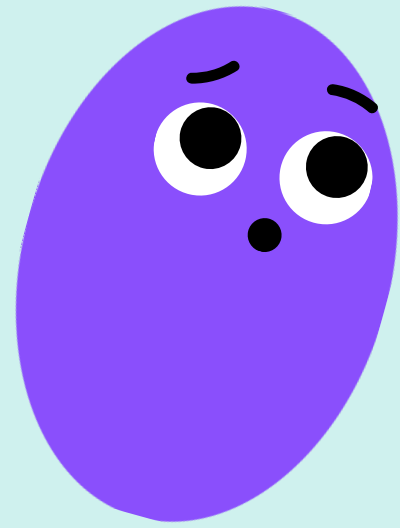
1. Atpažinti ir įvardyti pagrindines geometrines figūras (trikampį, kvadratą, apskritimą ir kt.),
2. Suprasti geometrinių figūrų savybes ir taikymą realiame gyvenime, pvz. architektūroje.
3. Mokytis kūrybiškai pritaikyti geometrines figūras tiek matematikos, tiek dailės kontekste, dirbant grupėse ir individualiai, atliekant praktines užduotis.

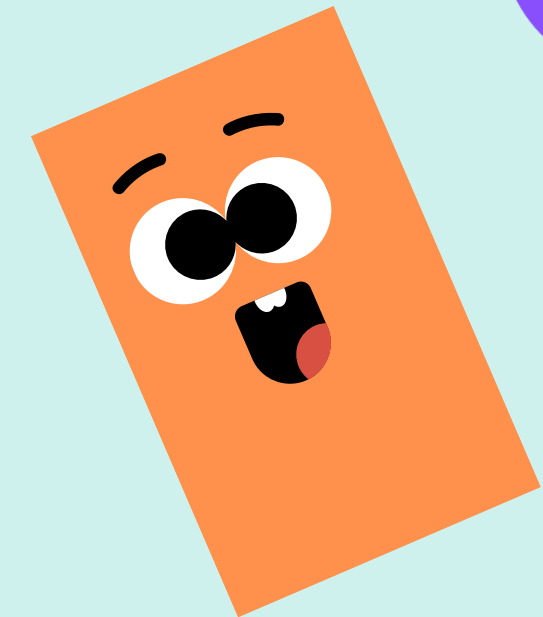
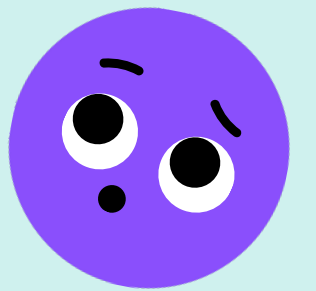
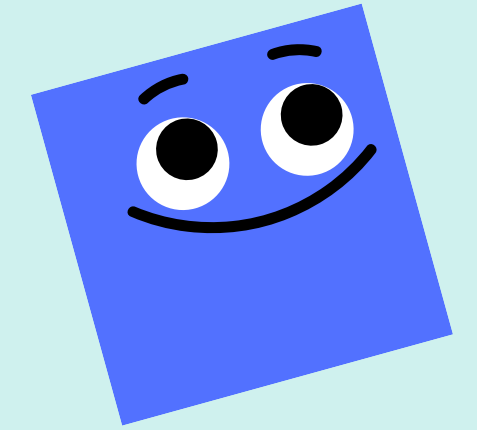
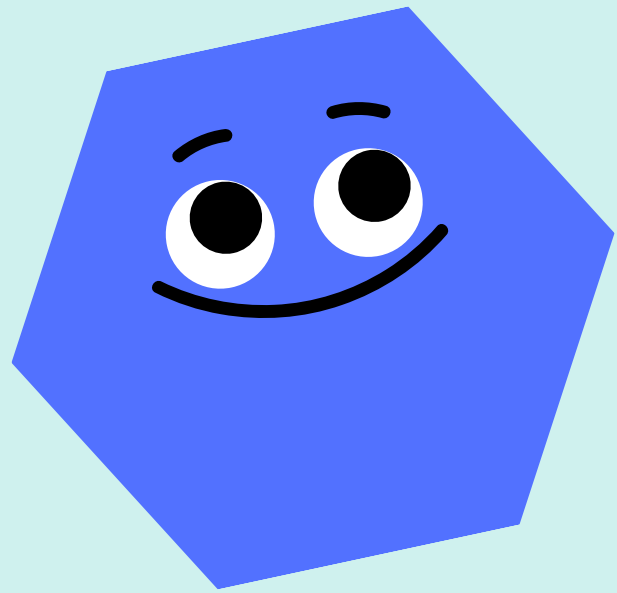
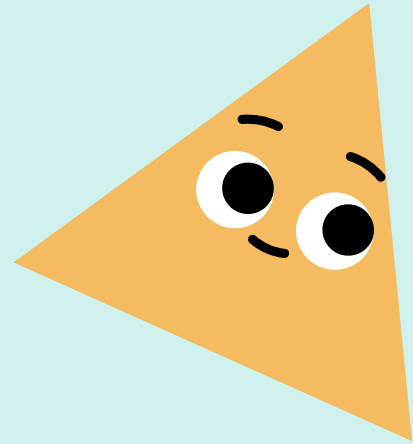
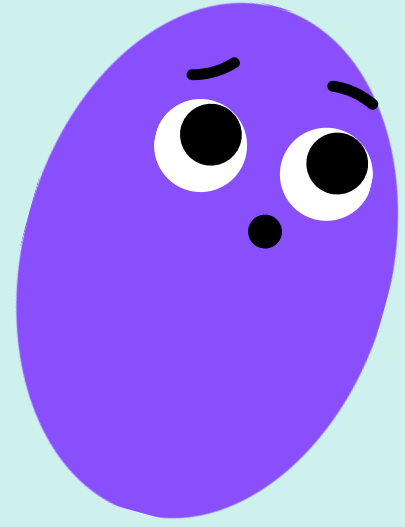
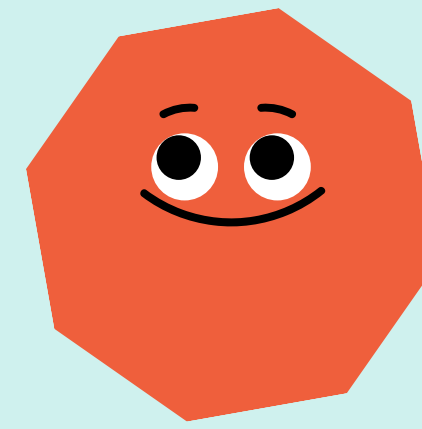
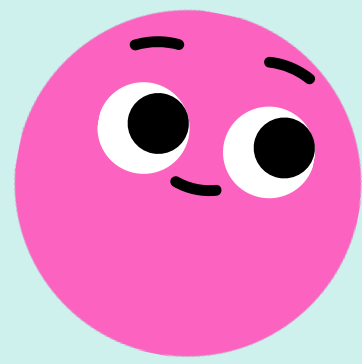


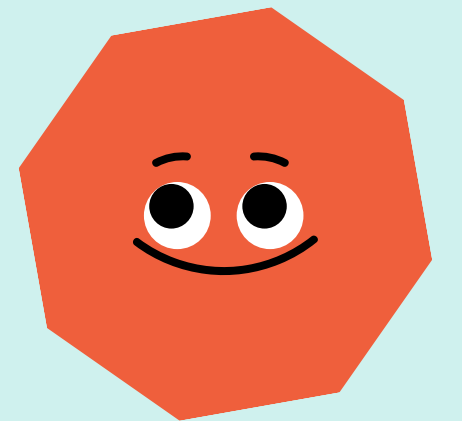
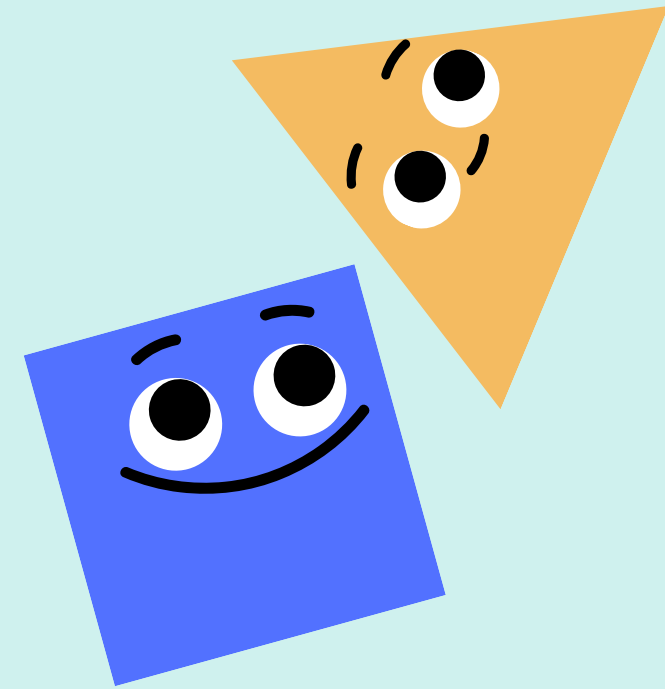
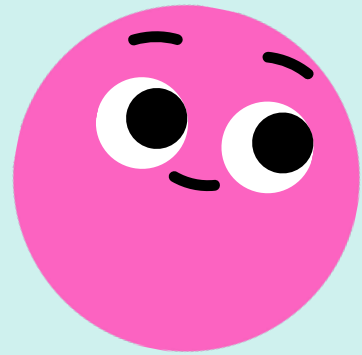
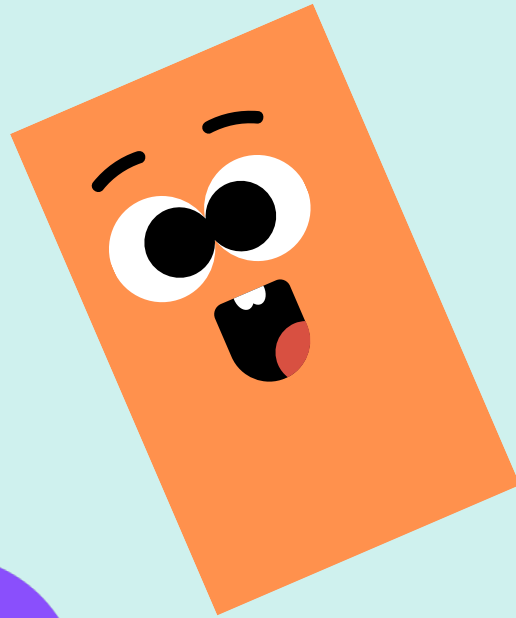
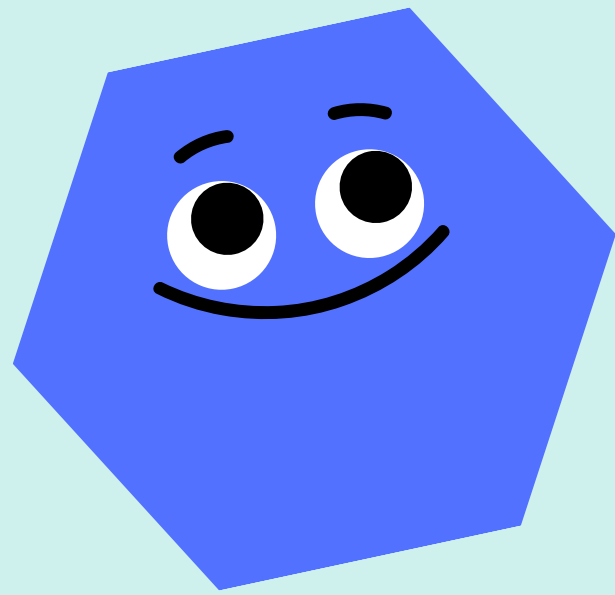
**Kokias geometrinės
figūras matote?**

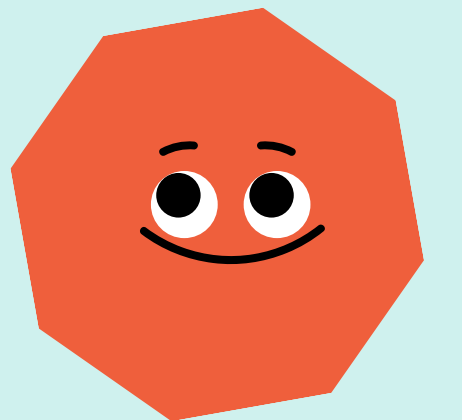
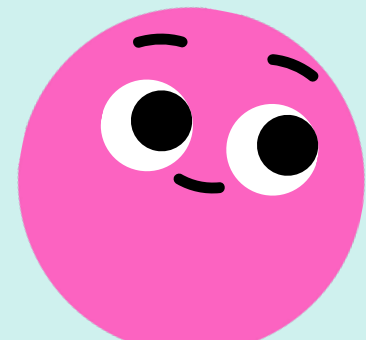
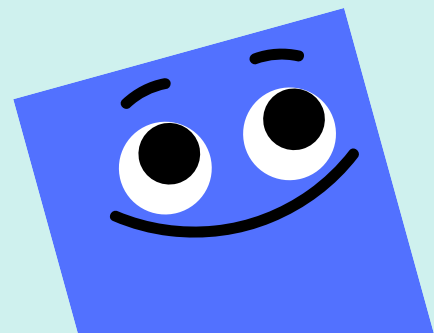
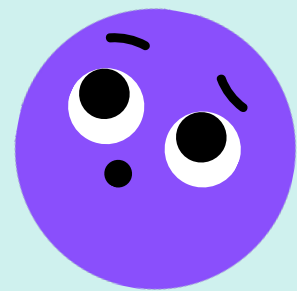
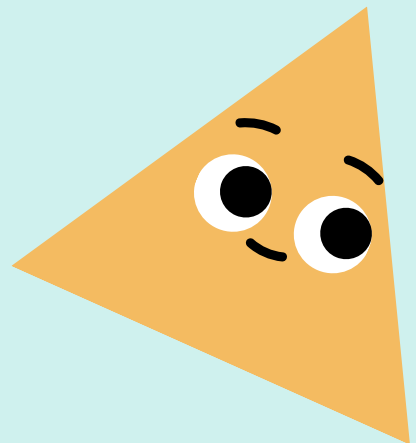
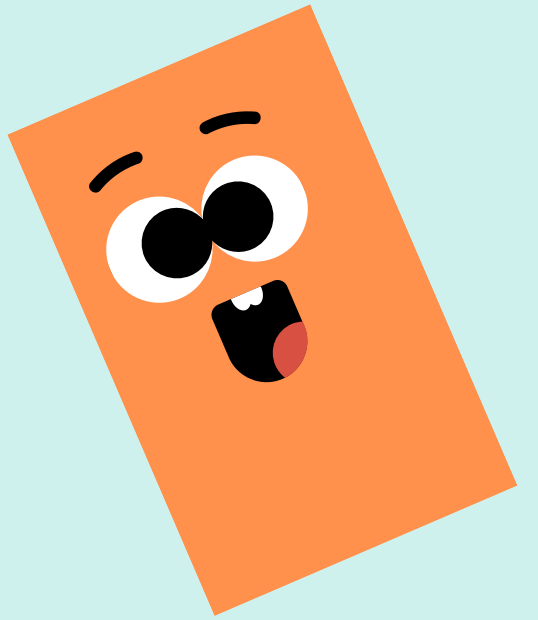
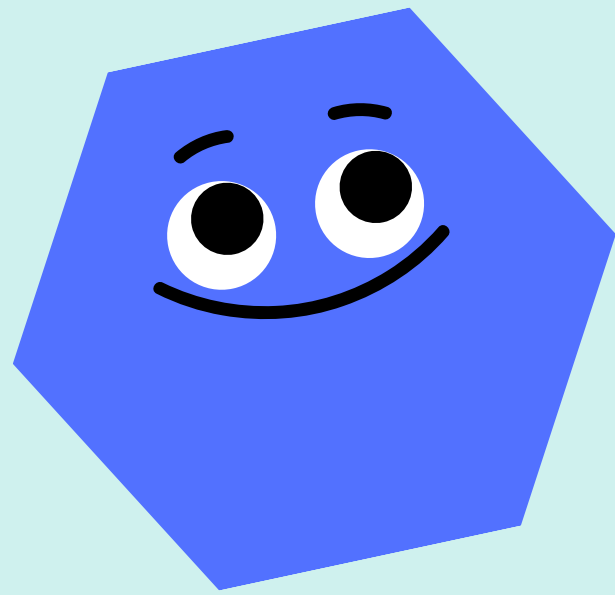


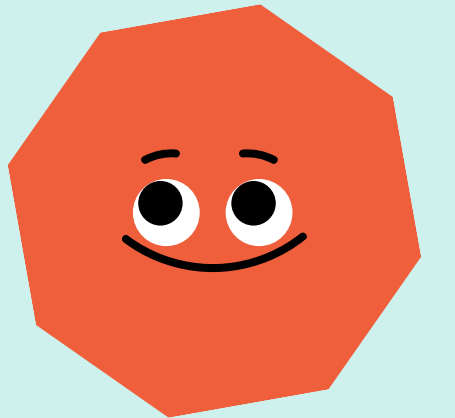
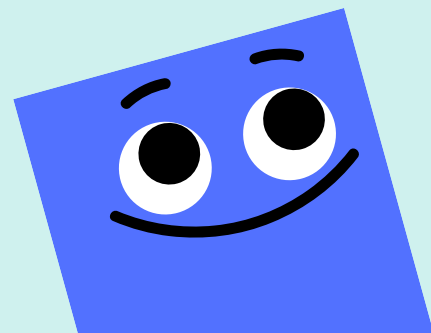
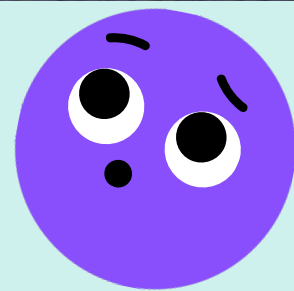
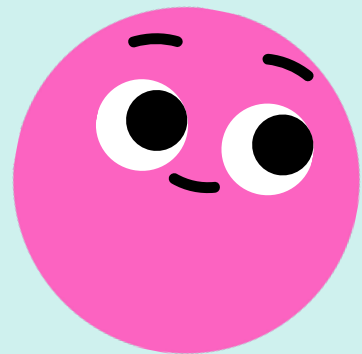
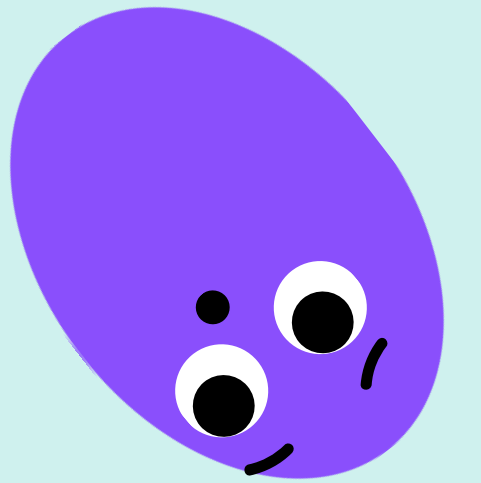
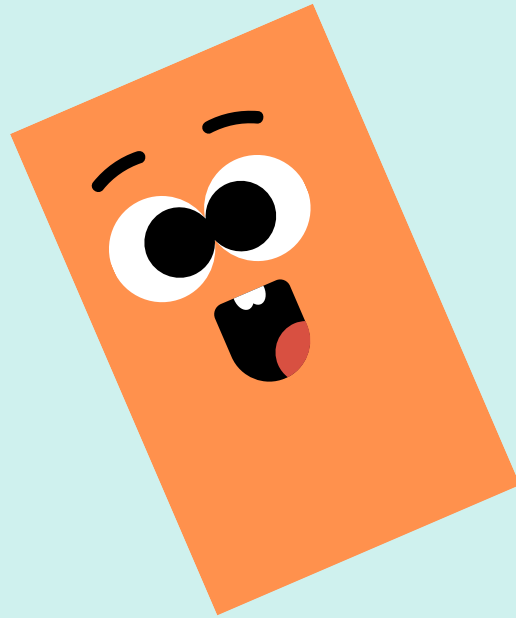
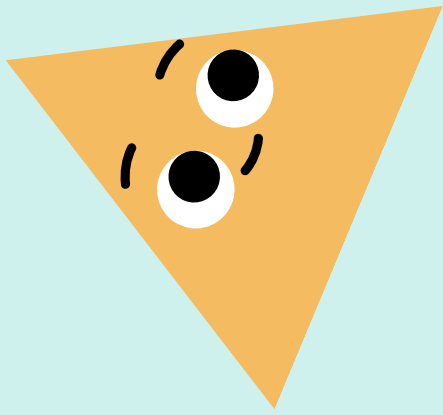
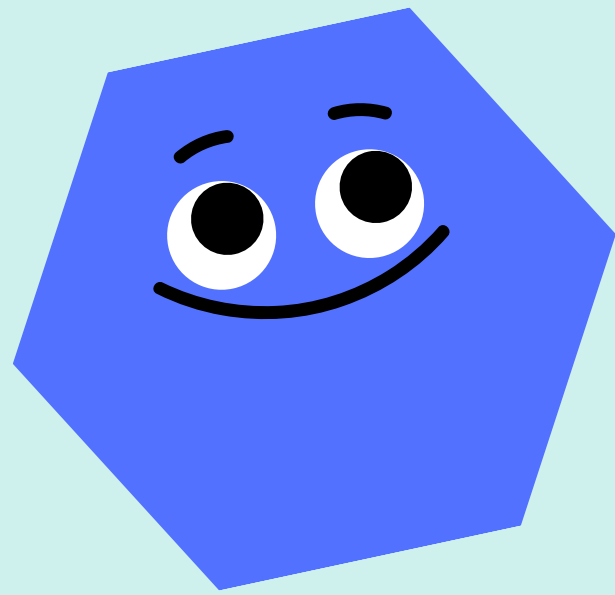


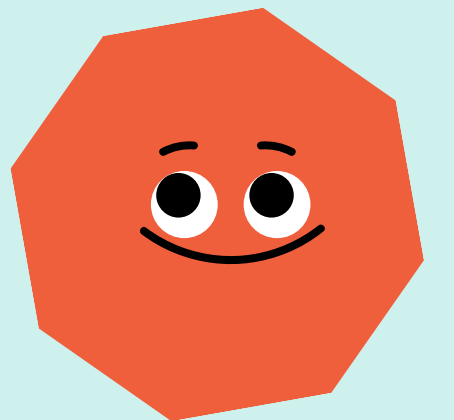
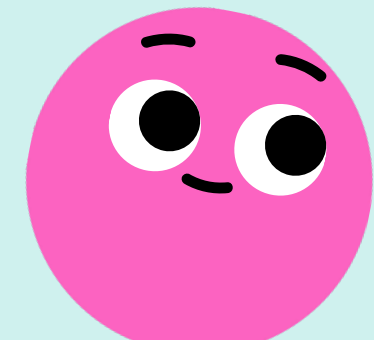
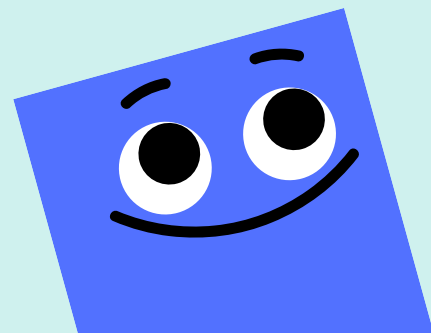
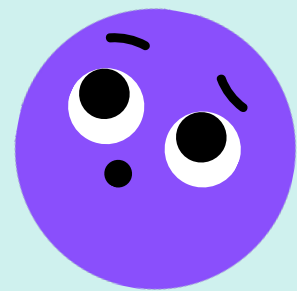
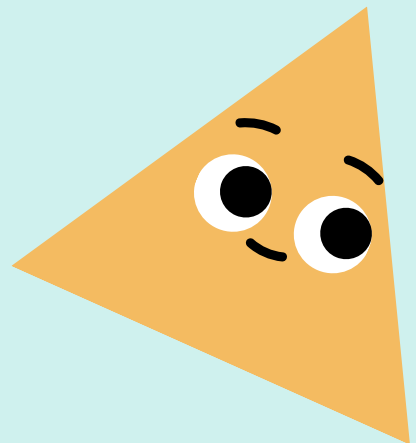
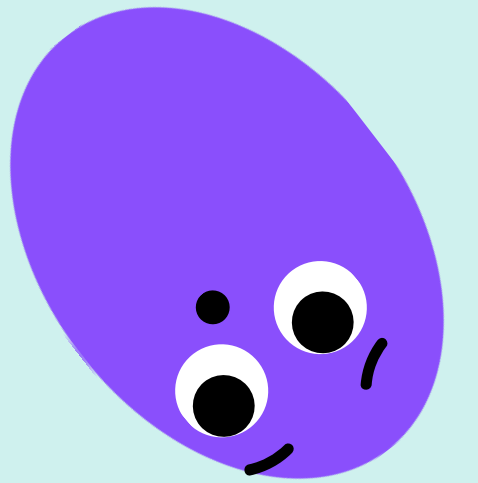
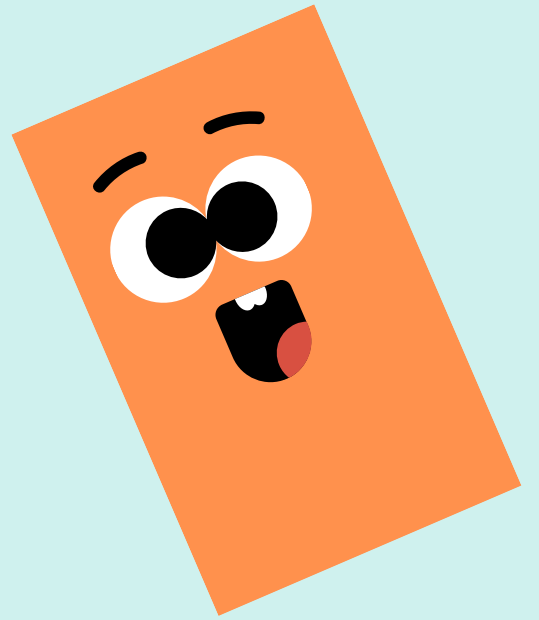
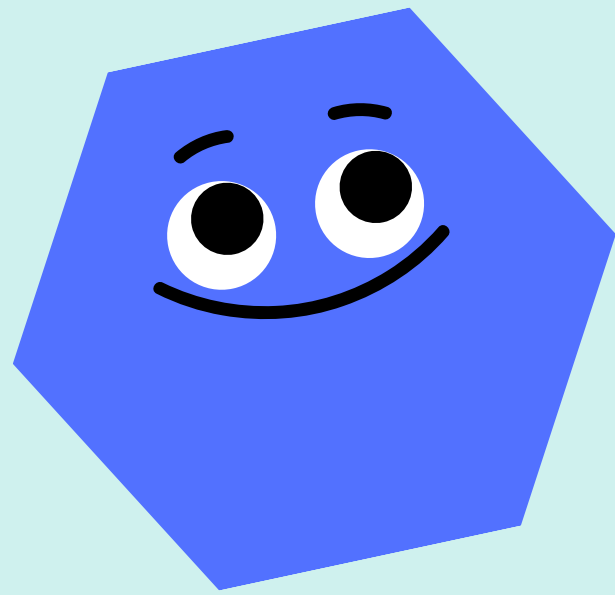


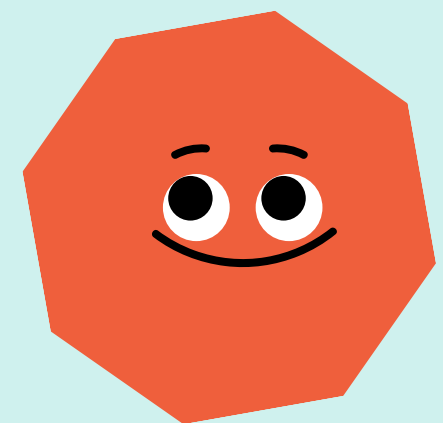
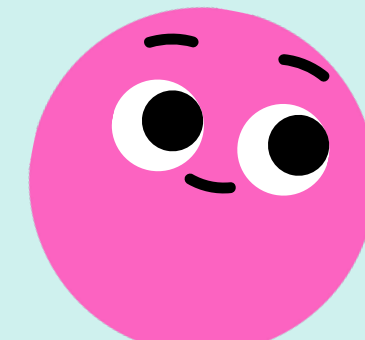
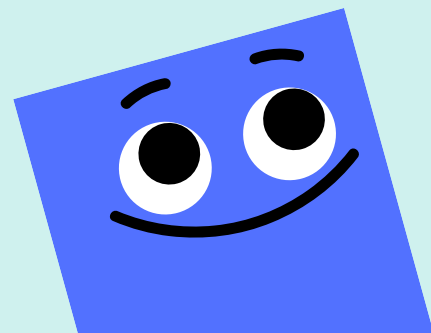
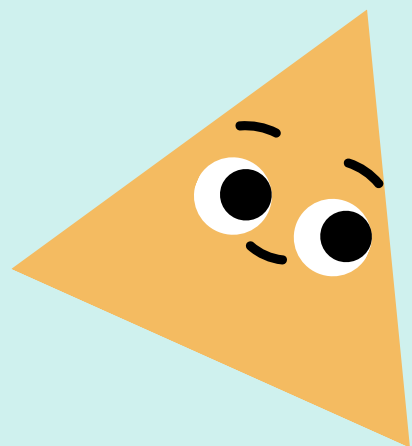
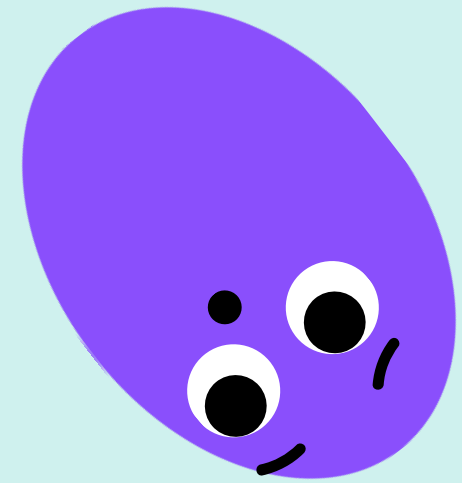
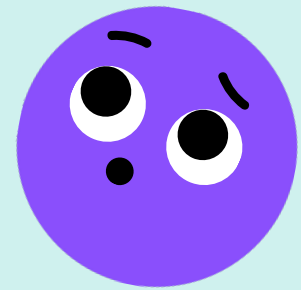
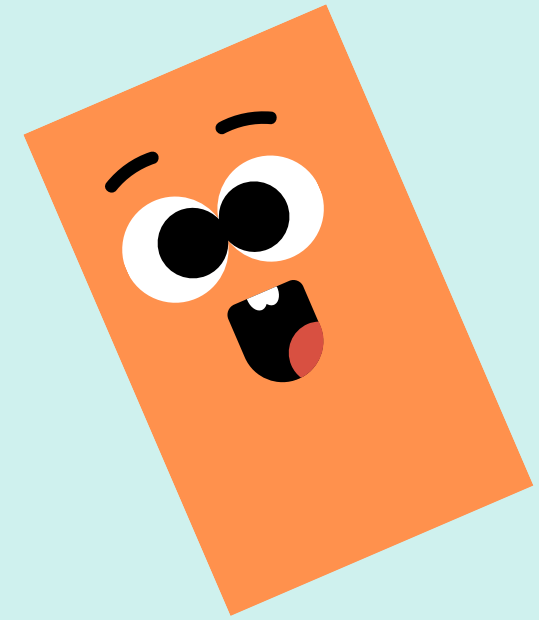
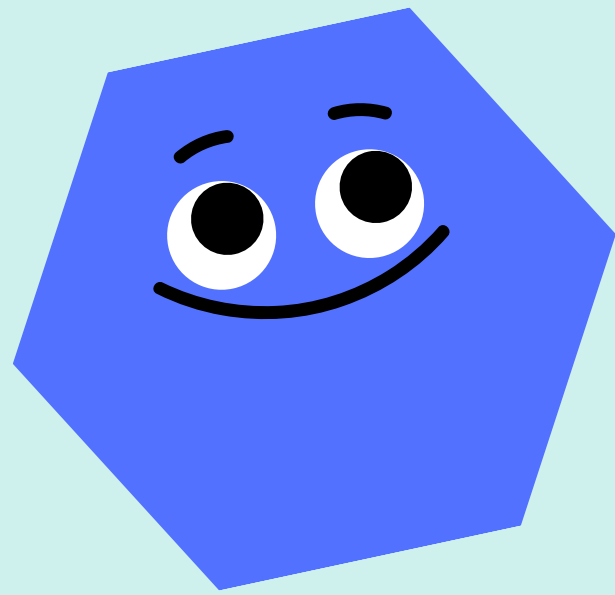


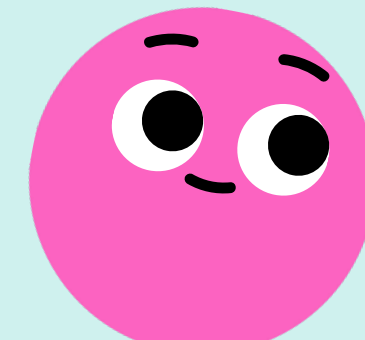
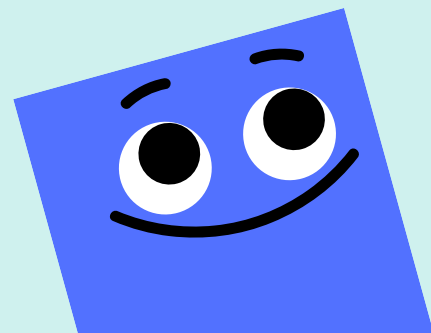
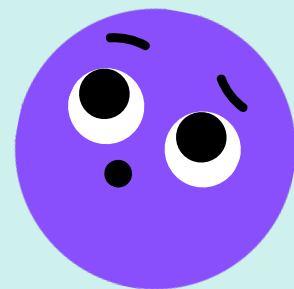
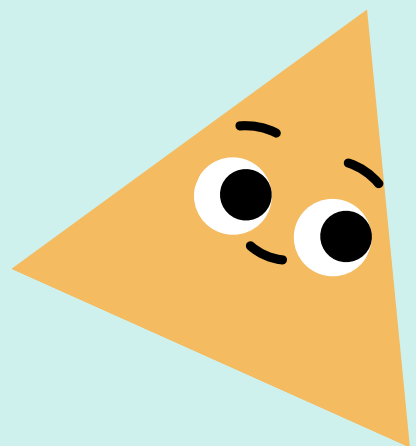
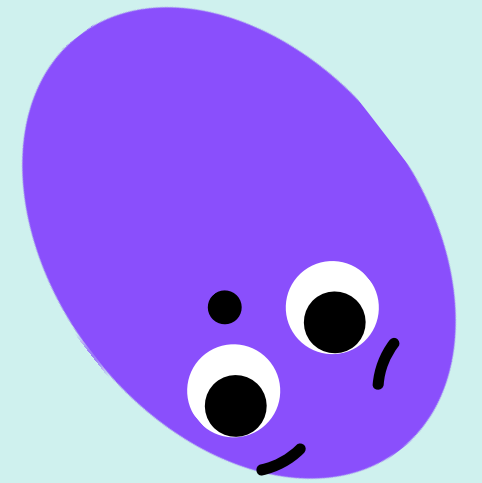
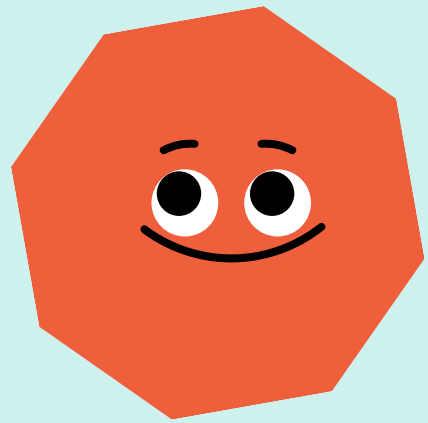
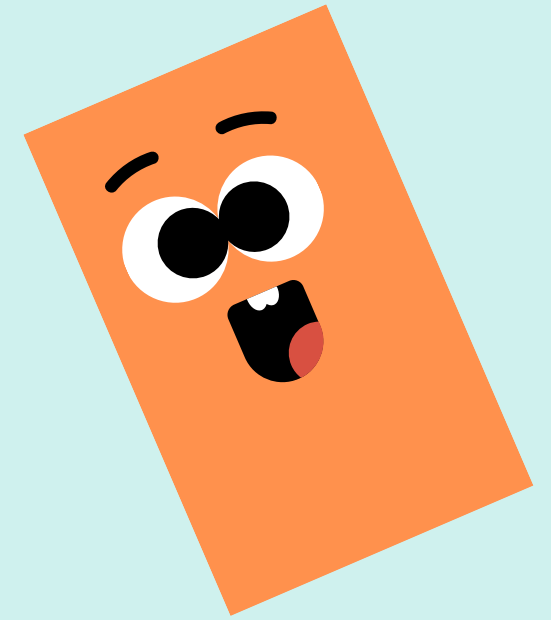
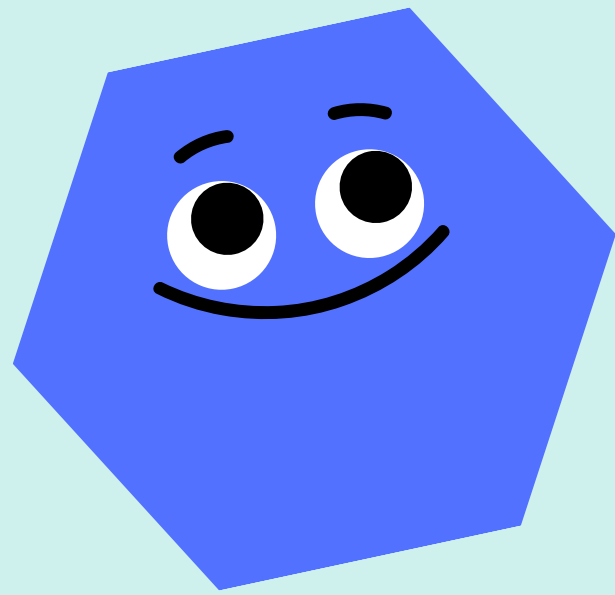


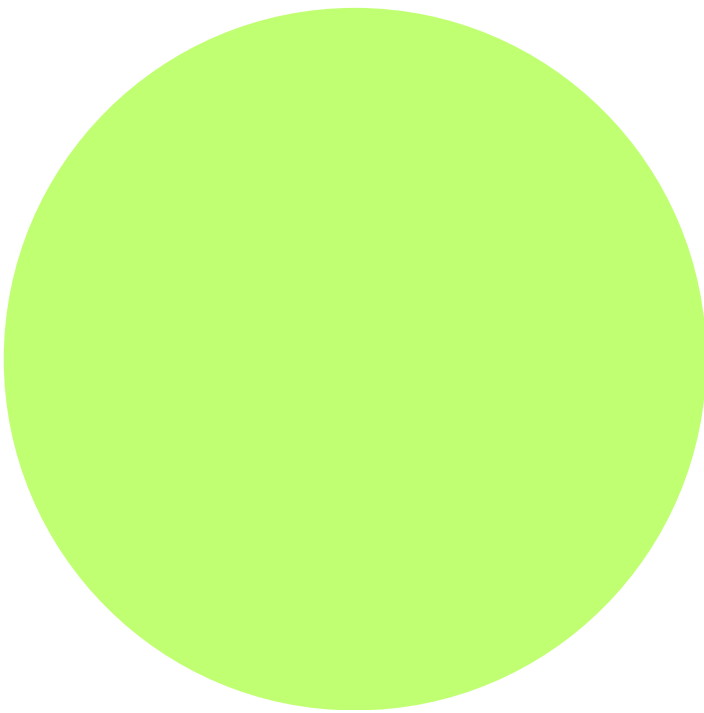
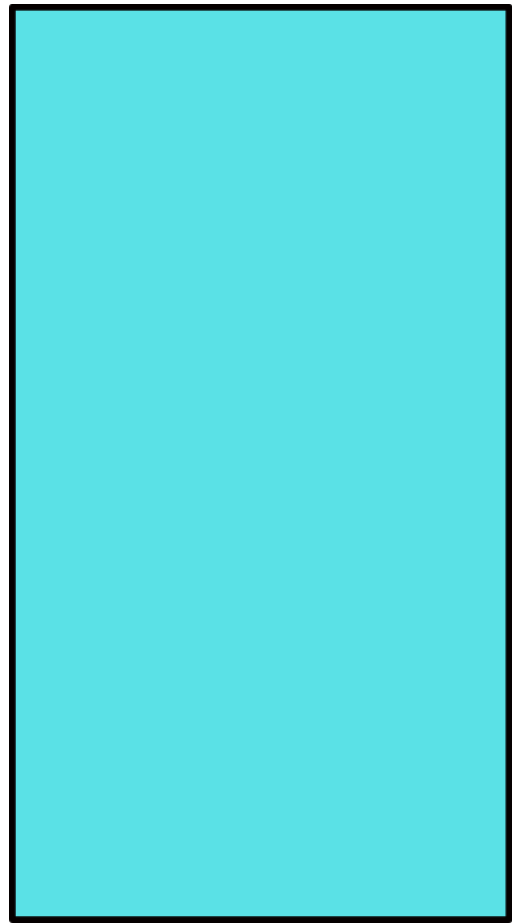
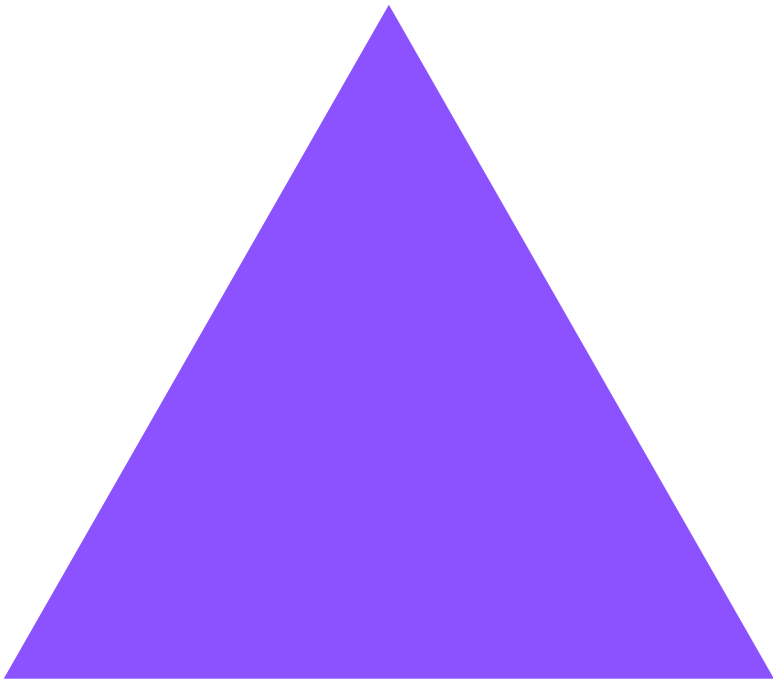


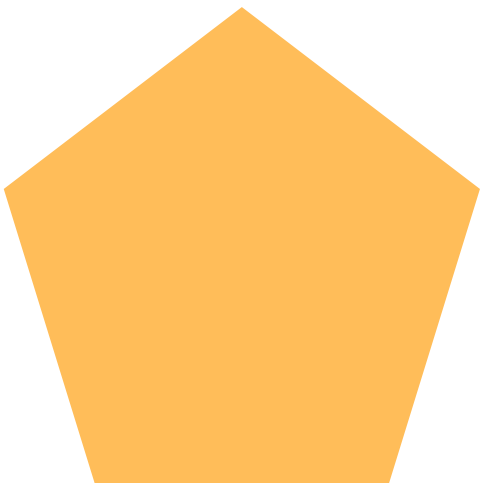
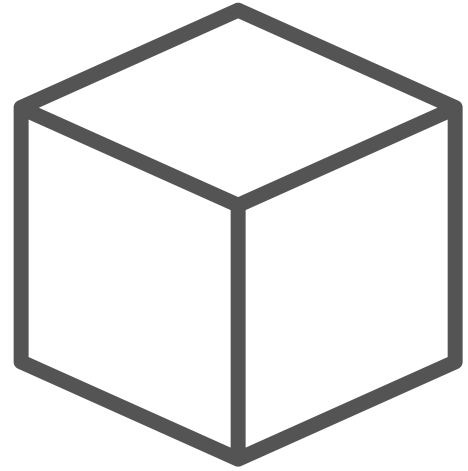
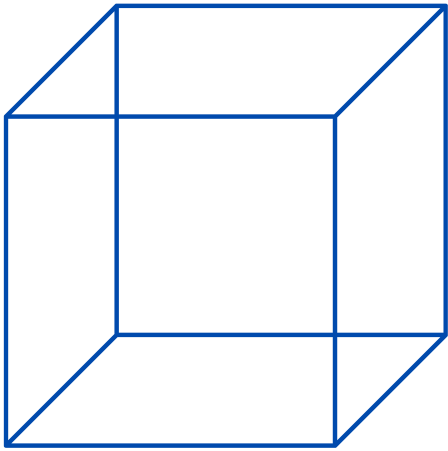
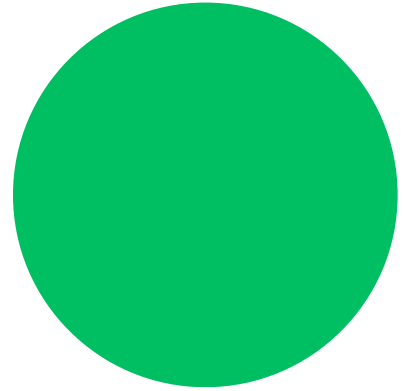
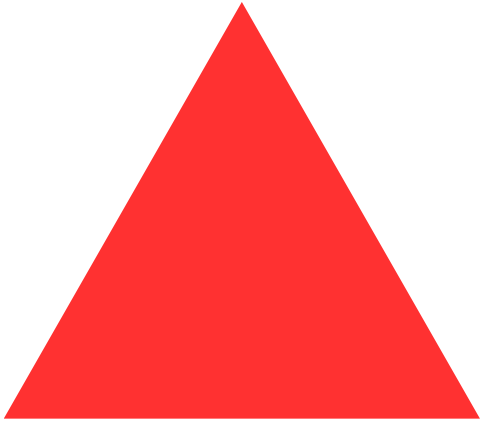
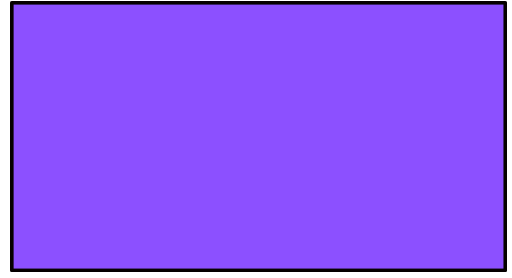


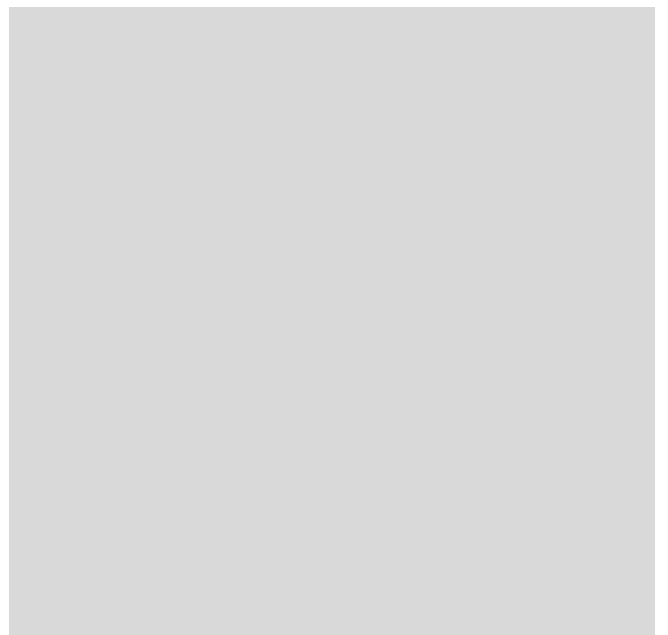
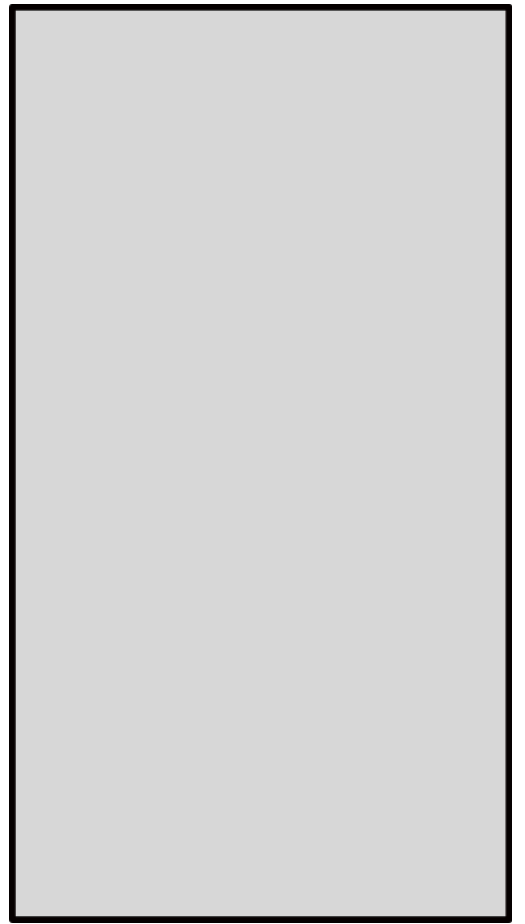
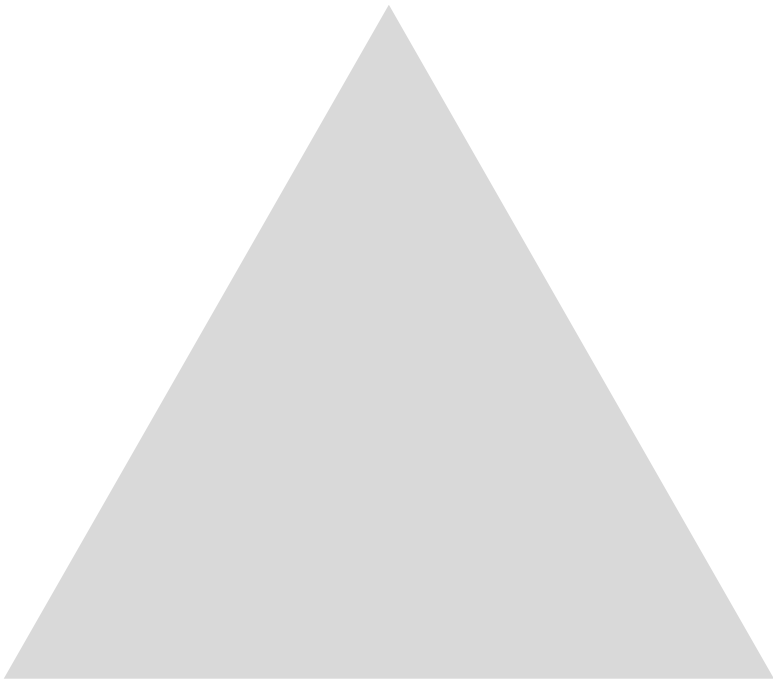


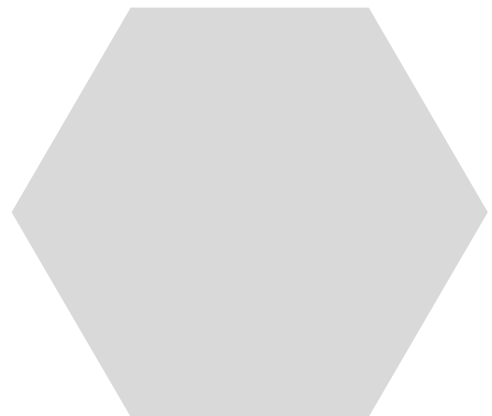
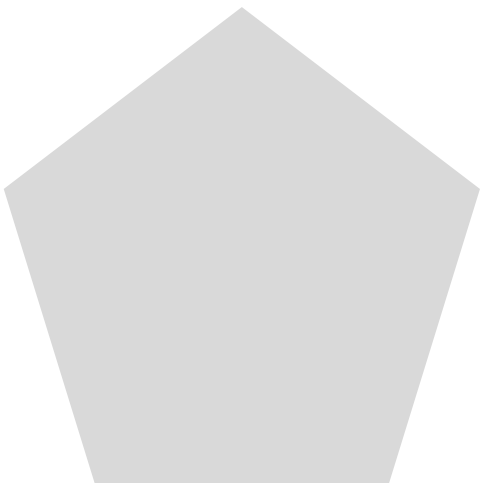
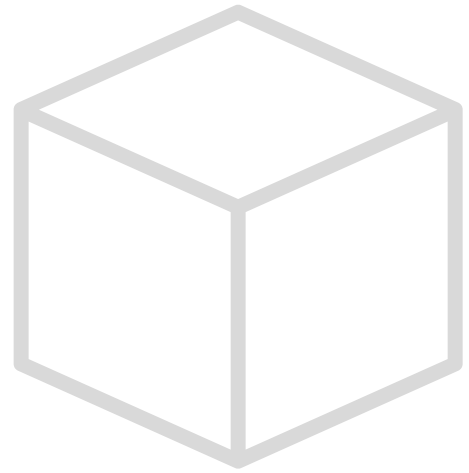
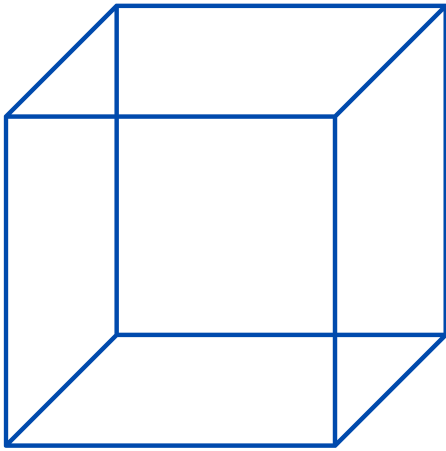
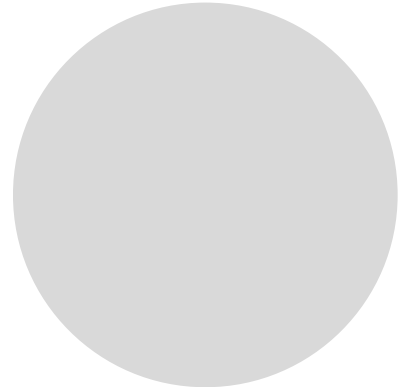
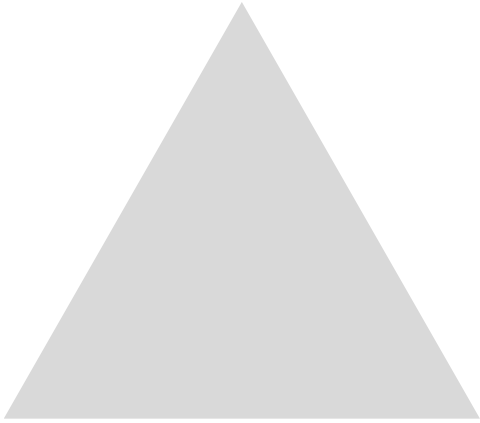
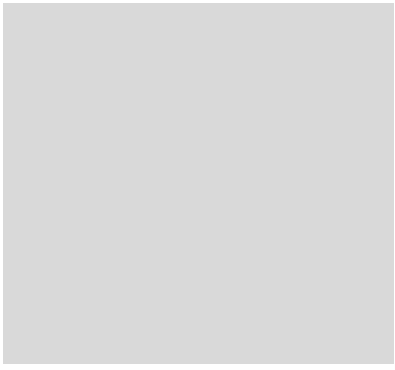












Pastatų nuotraukos dėlionėms - mokytoja iš anksto iškerpa į kelias dalis.



Vilniaus šv. vyskupo Stanislovo ir šv. Vladislovo arkikatedra bazilika. Šventaragio g.



Vilniaus Rotušė, Didžioji g. 31





Dominikonų g 12, Vilnius
(gyvenamasis namas)



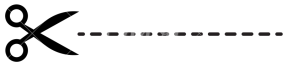
Dominikonų g. 15, Vilnius
mišrios paskirties pastatas (įsikūrusios įmonės, dalis gyvenama)



Vilniaus Dievo gailestingumo šventovė - bažnyčia.
Dominikonų g. 12, Vilnius



Knygynas. Vilnius. Didžioji g.27



Vilniaus universitetas. Universiteto g.3



Didesnė delionė disleksiją turinčiam mokiniui. Iškirpti stambesnėmis dalimis



Žodžių bankas:

ROTUŠĖ

KATEDRA

BAŽNYČIA

NAMAS

UNIVERSITETAS

MUZIEJUS

KNYGYNAS

STOGAS

PASTATAS

LANGAS



KVADRATAS

TRIKAMPIS

STAČIAKAMPIS

KUBAS

APSKRITIMAS

OVALAS

Galima papildyti žodžių banką.